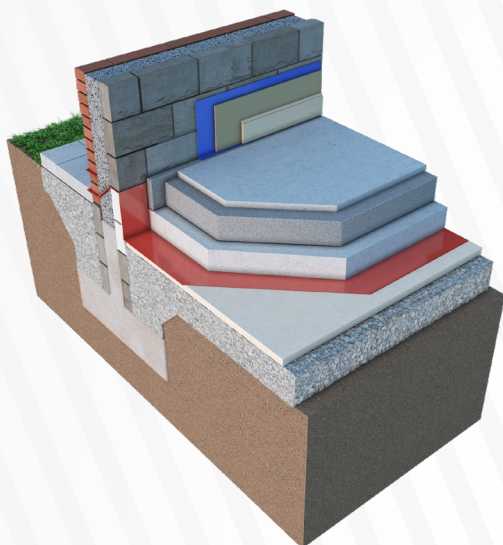


KORE FLOOR

Expanded Polystyrene Floor Insulation



KORE Floor Insulation is a high performance floor insulation consisting of rigid polystyrene (EPS) boards cut from moulded blocks of EPS. It is the opinion of NSAI Agreement and KORE Insulation that if this product is used in accordance the KORE Floor Insulation System Certificate (Certificate No.04/0097) that it will meet the requirements of the Building Regulations 1997 to 2019, as indicated in Section 1.2 of the KORE Floor Insulation System Irish Agreement Certificate.

Benefits of KORE Floor Insulation

- Meets and exceeds building regulations
- Suitable for passive house construction
- Easy to work with and install
- Exceptional compressive strength making the product suitable for use in both domestic and commercial applications
- EPS offers the best price/performance ratio compared to any other insulation material
- Thermal mass benefits from concrete construction
- Suitable for use with underfloor heating systems
- KORE Floor can meet and exceed nZEB standards at a range of thicknesses across each grade of material

Product Description

The closed cell nature of the boards ensures a consistent thermal and compressive performance throughout the lifetime of the building. KORE Floor Insulation can be manufactured to accommodate very high compressive strengths, making the product suitable for both domestic and commercial application.

ISO Standards

KORE External is manufactured under the following standards:

- 1) ISO 14001:2015 - Environmental Management systems
- 2) ISO 9001:2015 - Quality Management Systems
- 3) ISO 45001:2018 – Occupational Health & Safety Management System

Thermal Performance

• KORE Floor EPS70 White	0.037W/mK
• KORE Floor EPS70 Silver	0.031W/mK
• KORE Floor EPS100 White	0.036W/mK
• KORE Floor EPS100 Silver	0.031W/mK
• KORE Floor EPS150 White	0.035W/mK
• KORE Floor EPS150 Silver	0.031W/mK
• KORE Floor EPS200 White	0.033W/mK
• KORE Floor EPS300 White	0.032W/mK

EN Standards

KORE Floor Insulation is a high performance floor insulation consisting of rigid polystyrene (EPS) boards cut from moulded blocks of EPS that are manufactured in accordance with IS EN 13163:2012+A2:2016 Thermal insulation products for buildings - Factory made expanded polystyrene (EPS) products - Specification.

Product Name	Application	New Build	Retrofitting
KORE Floor EPS70 Silver	Ground Floor & Suspended Floors	Yes	Yes
KORE Floor EPS70 White	Ground Floor & Suspended Floors	Yes	Yes
KORE Floor EPS100 Silver	Ground Floor & Suspended Floors	Yes	Yes
KORE Floor EPS100 White	Ground Floor & Suspended Floors	Yes	Yes
KORE Floor EPS150 White	Ground Floor & Suspended Floors	Yes	Yes
KORE Floor EPS150 Silver	Ground Floor & Suspended Floors	Yes	Yes
KORE Floor EPS200 White	Ground Floor & Suspended Floors	Yes	Yes
KORE Perimeter Strips EPS70 White	Floor Perimeter	Yes	No
KORE Perimeter Strips EPS70 White	Floor Perimeter	Yes	No

EPD

KORE Insulation has produced an Environmental Product Declaration for all grades of our Expanded Polystyrene material. This shows that KORE is being open and transparent in regards to the Environmental Impact our product has through its production.

**A copy of this is available on our website.*

Design Guides

KORE Insulation provides a number of design guides for each of our products, including KORE Floor. These documents provide recommendations and suggestions on how to use our products.

*Design Guides are available on request, or additionally on our website and resource centre.

Dimensions

Standard Size: 1.200m x .600m
1.800m x 1.200m

Standard Thickness: KORE Floor (all grades): 20mm - 300mm.

*Project specific dimensions can be accommodated.

Technical Support

KORE Insulation provides a comprehensive technical support service that includes:

- U-value calculations
- Condensation risk analysis
- Determination of exposure zone
- Accredited drawings and details
- Thermal bridging analysis results
- Temperature factor analysis
- BIM Files

Compressive Strength

KORE Floor EPS70: In accordance with IS EN 13163:2012 and EN826, compressive strength at 10% deformation, CS(10)70.

KORE Floor EPS100: In accordance with IS EN 13163:2012 and EN826, compressive strength at 10% deformation, CS(10)100.

KORE Floor EPS200: In accordance with IS EN 13163:2012 and EN826, compressive strength at 10% deformation, CS(10)200.

KORE Contact Details

P: +353 49 4336998 **F:** +353 49 4336823

E: info@koresystem.com **W:** www.kore-system.com

Address:

The Green
Kilnaleck
Co. Cavan
A82 T291

Facebook: www.facebook.com/KOREIreland

Twitter: www.twitter.com/KORESsystem